

ISSUES AND REVISIONS

I.	R.	DESCRIPTION	DATE
		PRELIMINARY	
		ISSUE	10-07-14

DREIBRODT ROAD BRIDGE  
GUADALUPE COUNTY ROAD AND BRIDGE

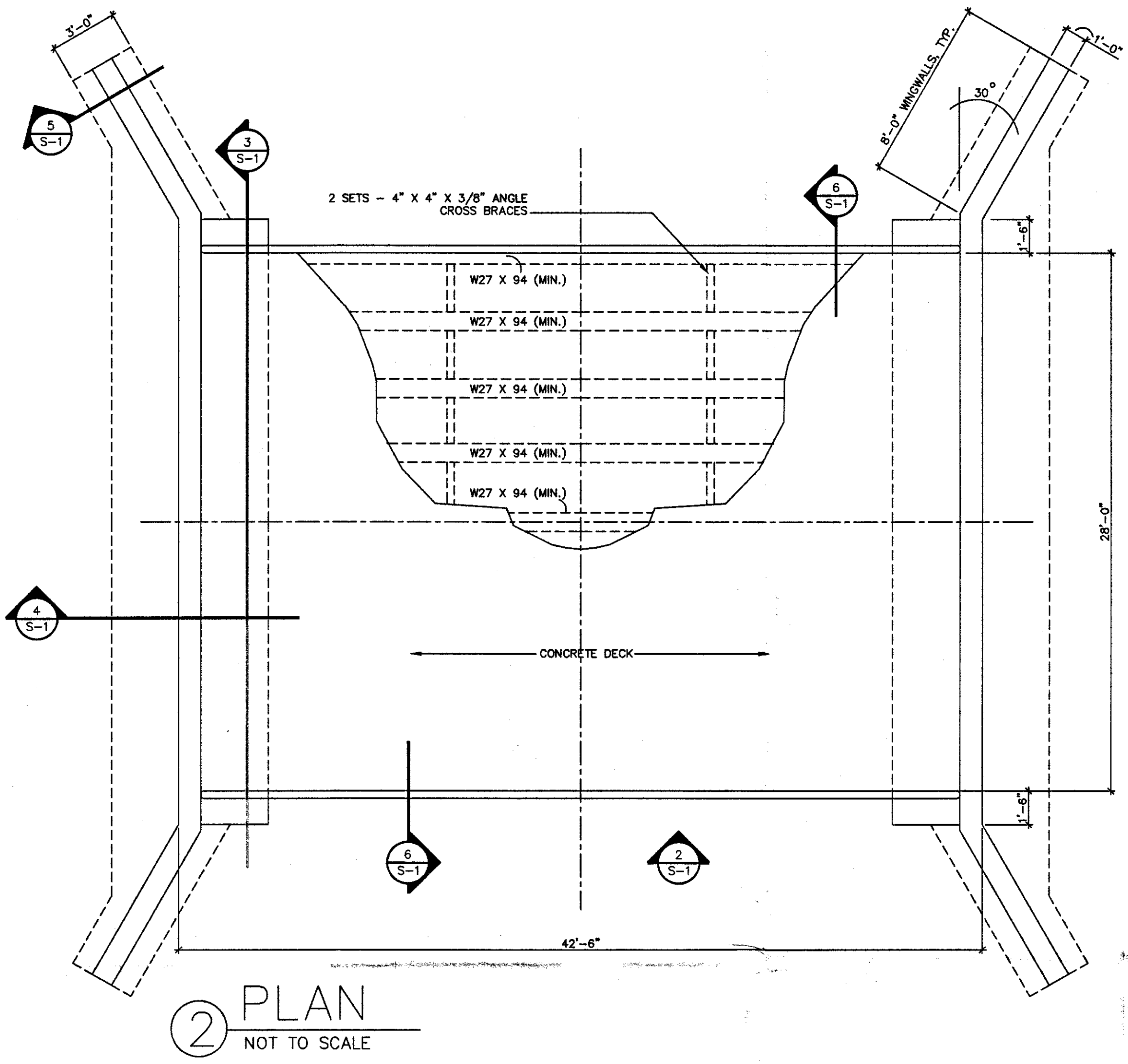
**WILSON ENGINEERING COMPANY, PLLC**  
F-7678  
208 FOWLKES STREET  
SEALY, TEXAS 77474  
PHONE: 979-885-3344  
FAX: 979-885-3379  
www.wilsonenr.com

PROJ. ARCH.	PROJ. NUMBER
	96-306
DRAWN BY	CHECKED BY

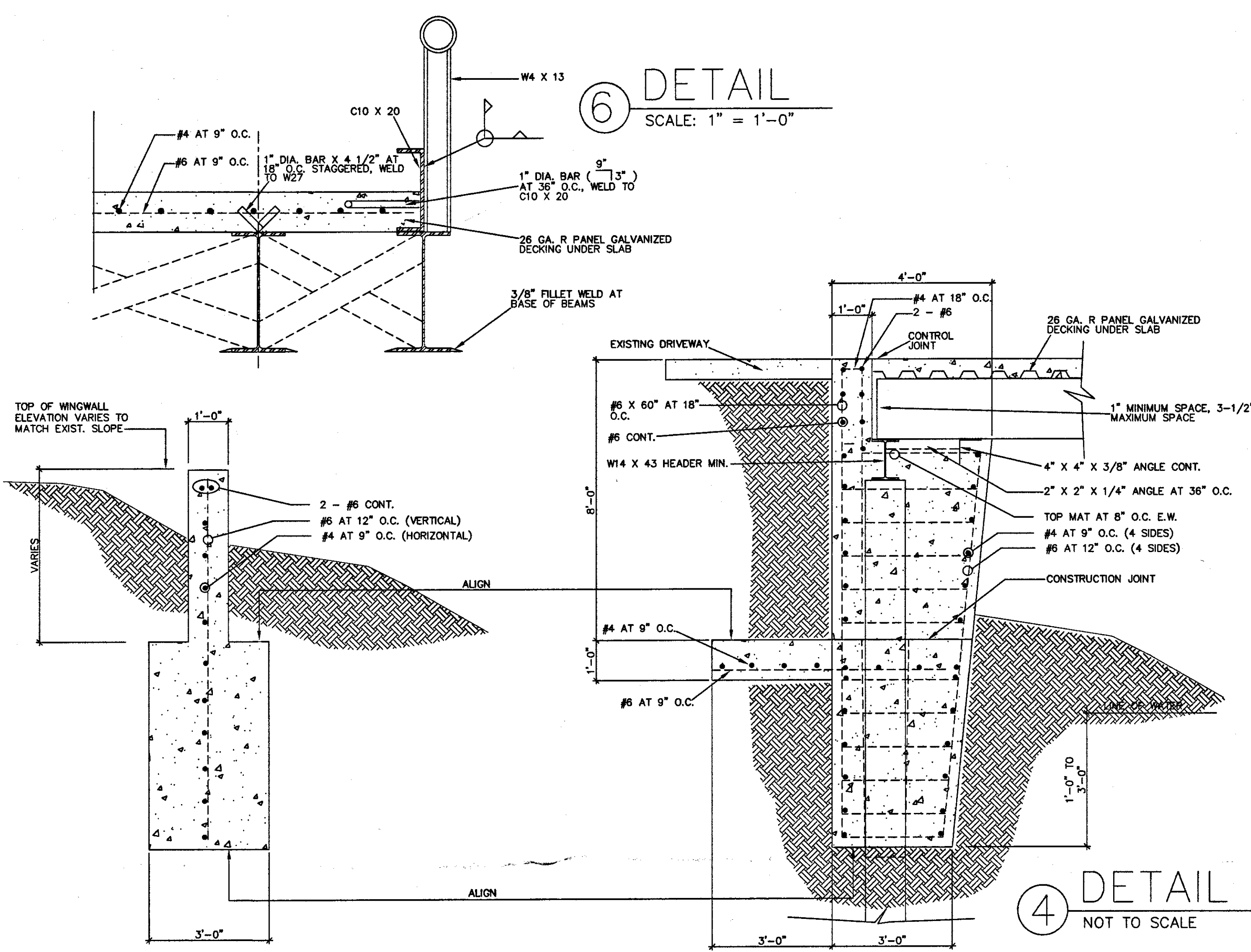
TITLE  
**FOUNDATION DESIGN**

SHEET

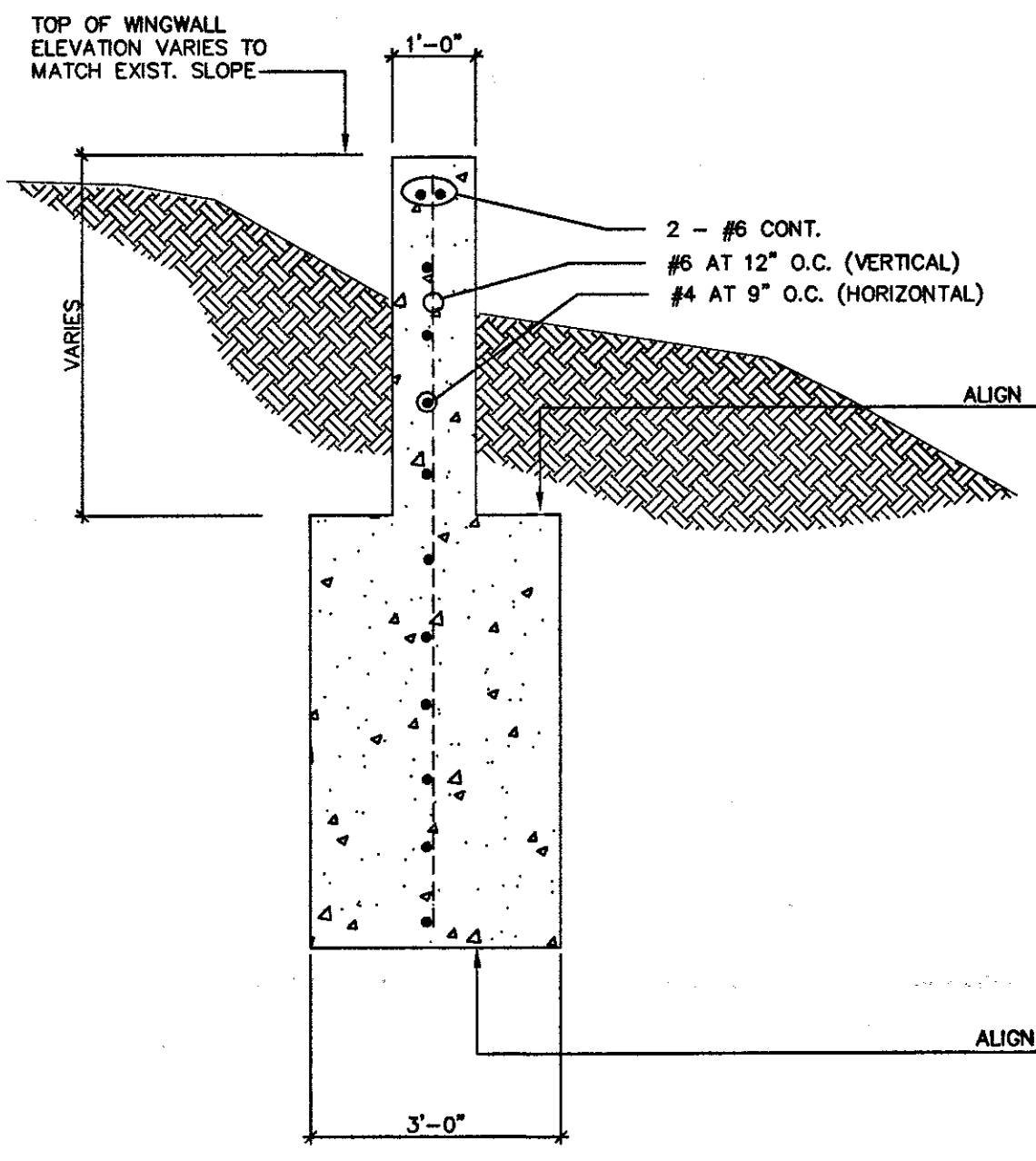
S-1  
OF SHEETS



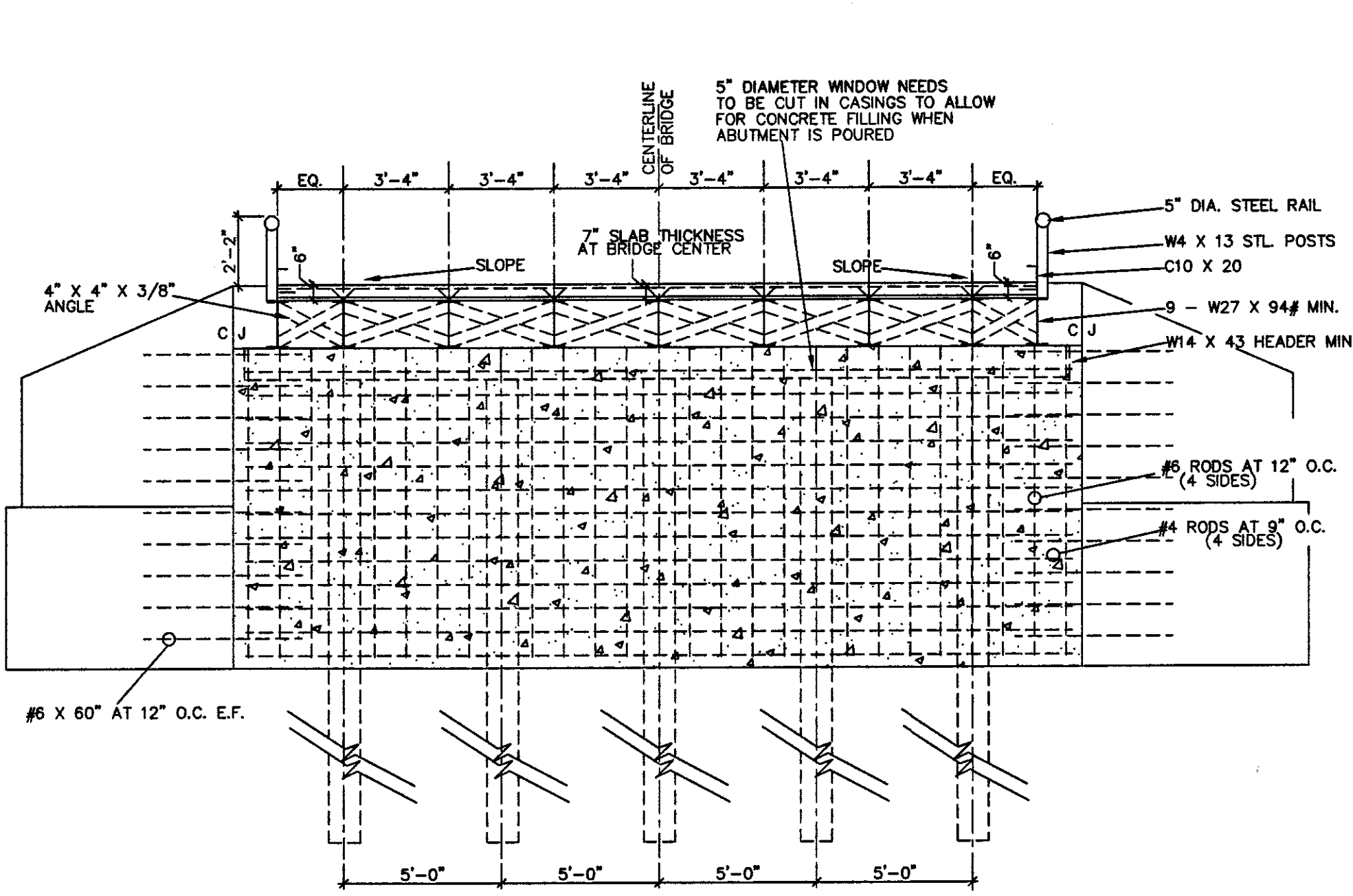
② PLAN  
NOT TO SCALE



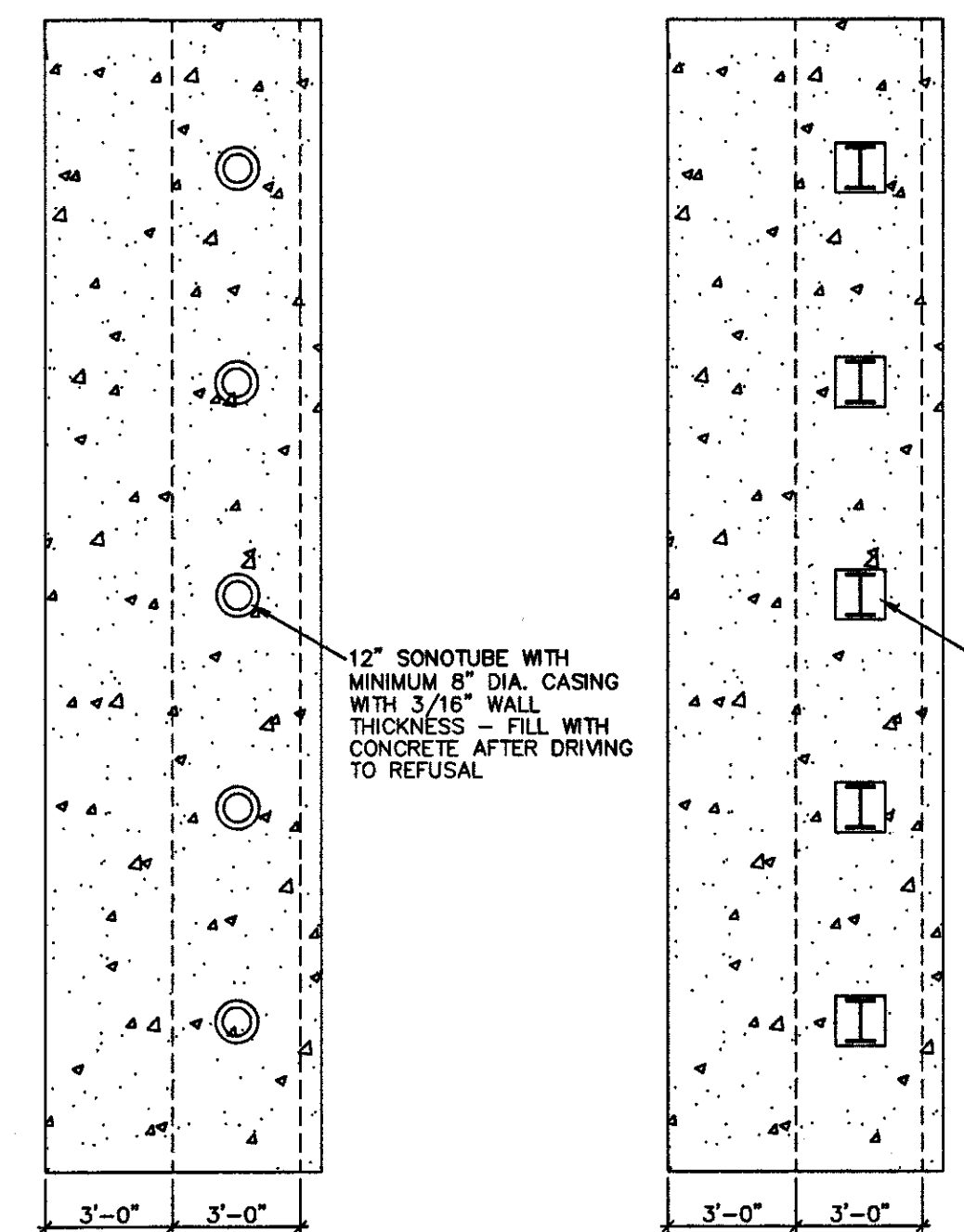
④ DETAIL  
NOT TO SCALE



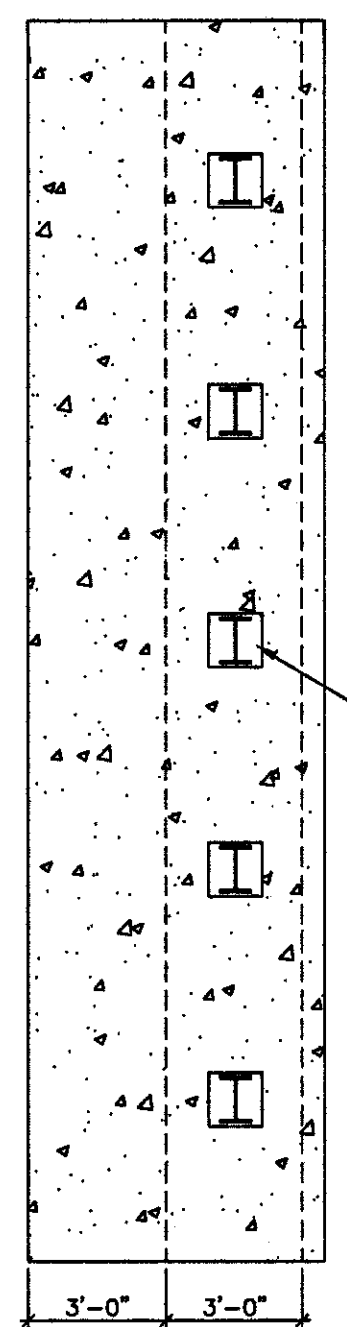
⑤ DETAIL  
SCALE: 1/2" = 1'-0"



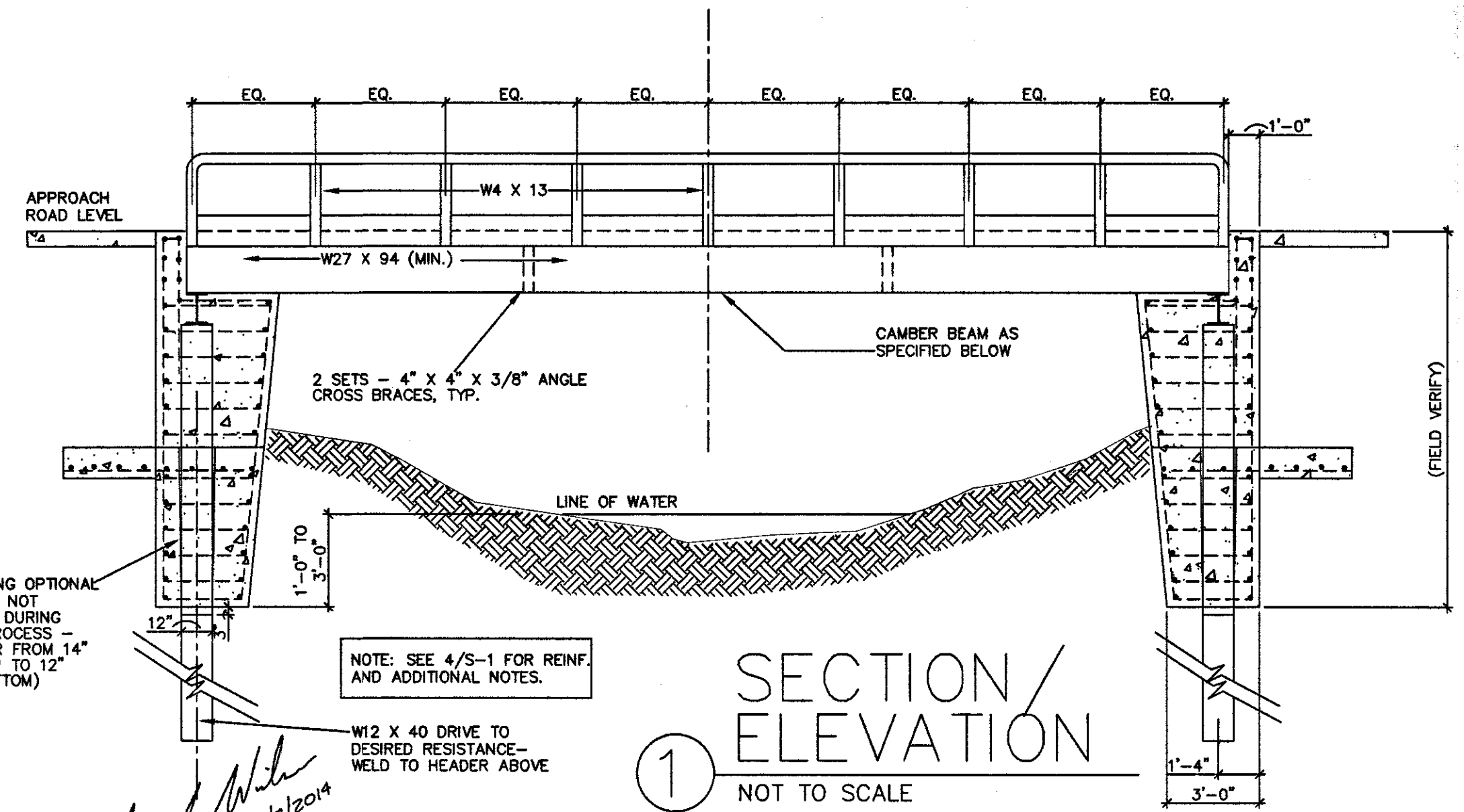
③ DETAIL AT FOUNDATION  
NOT TO SCALE



①B ALTERNATE PLAN DTL.  
NOT TO SCALE



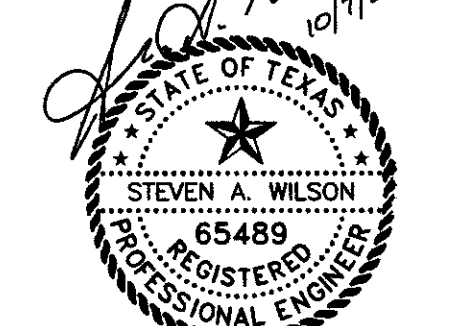
①A PLAN DETAIL  
NOT TO SCALE



① SECTION/ELEVATION  
NOT TO SCALE

GENERAL NOTES AND SPECIFICATIONS:

- CAMBER BEAMS 2 INCHES
- LIVE LOAD = HS20
- CONCRETE STRENGTH:  
FOUNDATION - 3,000 PSI @ 28 DAYS  
SLAB - 3,500 PSI @ 28 DAYS
- ALL STRUCTURAL SECTIONS AND PLATE STEEL SHALL BE A.S.T.M. A36-76 SUBJECT TO INSPECTION AND APPROVAL OF THE COUNTY. STRUCTURAL PIPE SHALL HAVE A MINIMUM YIELD POINT = 35,000 PSI. ALL MATERIALS SHALL BE TOP QUALITY SUBJECT TO INSPECTION AND APPROVAL OF THE COUNTY. ALL WORKMANSHIP SHALL CONFORM TO ACCEPTED GOOD PRACTICES. ALL STRUCTURAL STEEL CONNECTIONS SHALL BE FULL STRENGTH WELDED JOINTS. WELDING SHALL BE DONE IN ACCORDANCE WITH AMERICAN WELDING SOCIETY REQUIREMENTS EXCEPT WHERE SHOWN OTHERWISE. REINFORCING STEEL FOR CONCRETE SHALL BE HIGH BOND BARS CONFORMING TO A.S.T.M. A-615. EXPOSED STRUCTURAL METAL SURFACES SHALL BE PAINTED WITH INORGANIC ZINC COATING.



The seal appearing on this document was authorized by Steven A. Wilson, P.E. 65489, on October 7, 2014.

NOTE:  
- USED BEAMS ARE ACCEPTABLE.