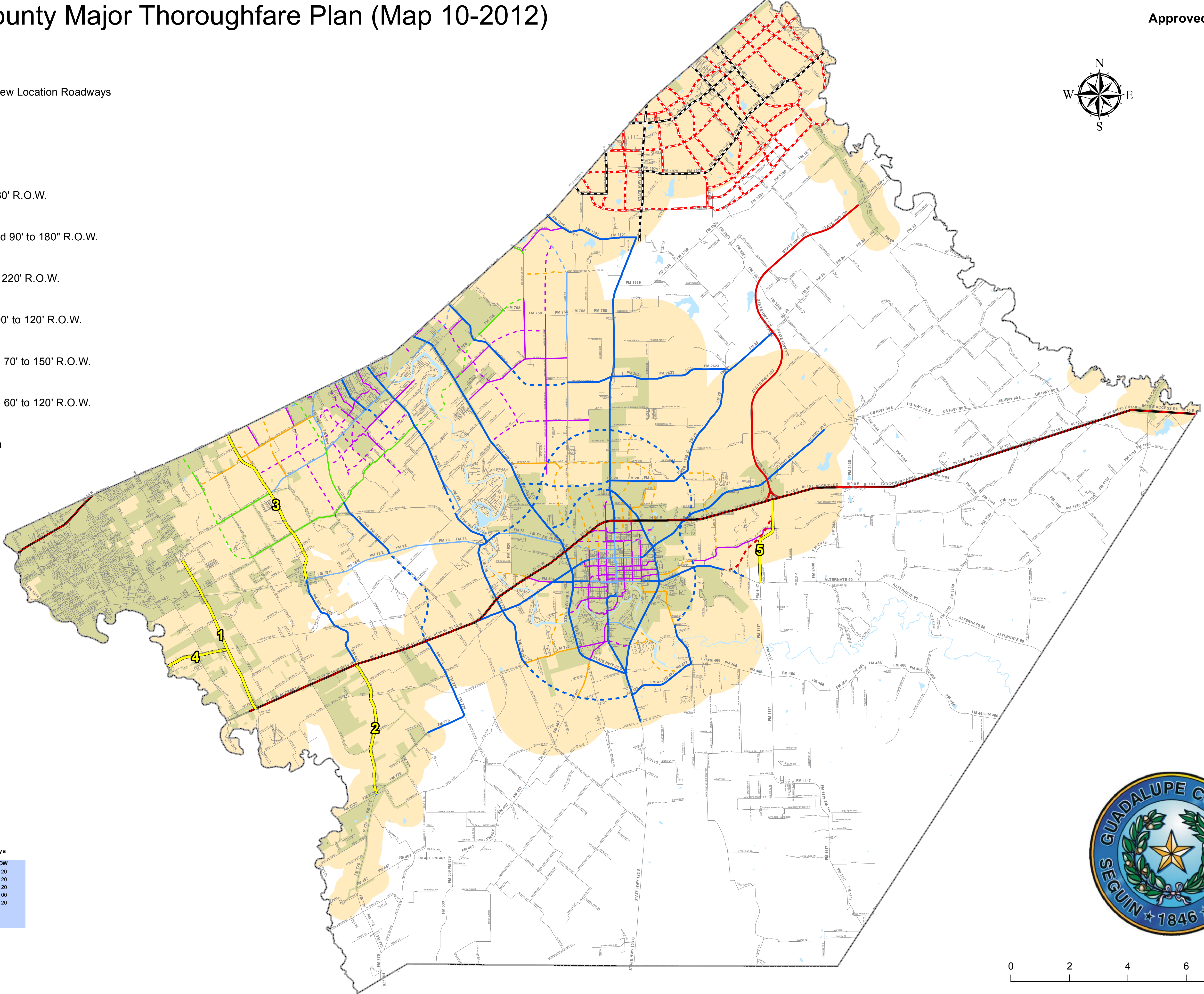
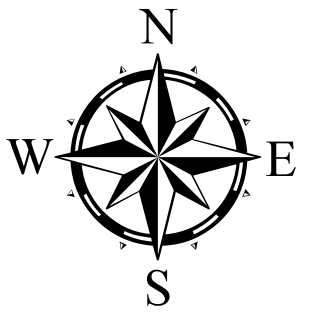


Guadalupe County Major Thoroughfare Plan (Map 10-2012)

Approved by Commissioners Court
 October 16, 2012
 Agenda Item 5-B

Legend

- County Line
- Guadalupe Co. Visioned New Location Roadways
- San Marcos Existing
- San Marcos Proposed
- Interstate
- Expressway
- Expressway - Proposed 180' R.O.W.
- Principal Arterial
- Principal Arterial - Proposed 90' to 180" R.O.W.
- Parkway
- Parkway - Proposed 90' to 220' R.O.W.
- Minor Arterial
- Minor Arterial - Proposed 90' to 120' R.O.W.
- Major Collector
- Major Collector - Proposed 70' to 150' R.O.W.
- Minor Collector
- Minor Collector - Proposed 60' to 120' R.O.W.
- Municipalities
- Extra Territorial Jurisdiction



Guadalupe Co. Visioned New Location Roadways

ID2	Name	ROW
1	FM 1103-H 10 Connector	120
2	FM 465-FM 775 Connector	120
3	FM 665-FM 335 Connector	120
4	Lower Seguin Rd-FM 1518 Connector	100
5	SH 130-FM 1117 Connector	120

Produced 10-15-2012

